



kerbtier.de

Die Käferfauna Deutschlands

kerbtier.de – Die Käferfauna Deutschlands

© 2007–2015 Christoph Benisch

Manual for the module „Compare photos“

Content:

1. Introduction
2. Accessing the photo comparison module
3. User interface
4. Search and display
5. Zoom and move
6. Save and publish
7. Revisions



kerbtier.de

Die Käferfauna Deutschlands

kerbtier.de – Die Käferfauna Deutschlands

© 2007–2015 Christoph Benisch



1. Introduction

When determining similar species, the user may like to compare high-resolution photos of those species side-by-side for a direct comparison of relevant characteristics.

This task can be either accomplished “manually” by searching the required photos on the internet and combining them in a standard graphics package.

Alternatively, the user can use the new kerbtier.de **comparison module** to display up to six species side-by-side, zoom in and out and display details to compare the relevant characteristics.

In this way characteristics relevant for determination, e.g. habitus, coloration, puncture, etc. can be easily compared. The differences are particularly striking when displayed side-by-side. The use of the module is intuitive; it shall be introduced in this document using three red Aphodius species as an illustrative example.





kerbtier.de

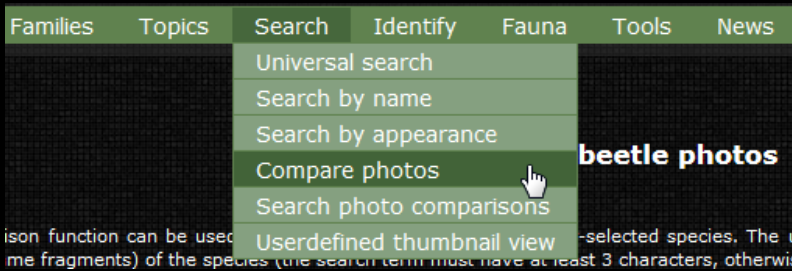
Die Käferfauna Deutschlands

kerbtier.de – Die Käferfauna Deutschlands

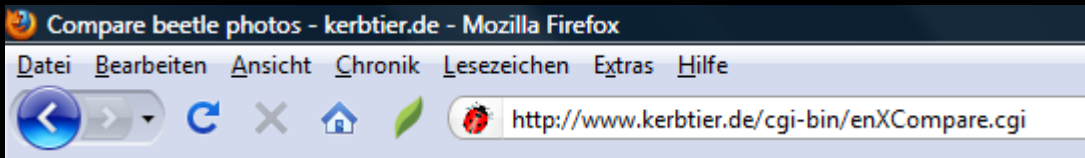
© 2007–2015 Christoph Benisch

2. Accessing the photo comparison module

The module can be found on the website <http://www.kerbtier.de> in the menu “Search” and can be accessed by clicking the menu entry „Compare photos“:



Alternatively, the page can be directly accessed by using this link: <http://www.kerbtier.de/cgi-bin/enXCompare.cgi>





3.1 User interface in mode „thumbnails“

The user interface offers two basic modes, which can be selected under the option „Preview mode“ 7 : While in mode „thumbnails“ all matching species are displayed in thumbnail overview T .

The screenshot shows the search and filter interface of the website. It includes a search bar with a dropdown menu for 'all' and a criteria limit of '≤3'. The search criteria are set to 'Species' and 'contains'. There are 'Search' and 'Reset' buttons. To the right, there are 'Sort/preview' options with dropdown menus for 'systematic', 'male', and 'thumbnails'. Below the search bar, a green bar indicates 'Matching species: 0'. A 'T' icon and a '4' callout are visible in the main content area. At the bottom, there is a 'Photo comparison' section with a '3x1' dropdown and icons for '8' and '10'.



kerbtier.de

Die Käferfauna Deutschlands

kerbtier.de – Die Käferfauna Deutschlands

© 2007–2015 Christoph Benisch

3.2 User interface in mode „list“

While in mode „list“ all matching species are displayed as text-based list **L**. For the species selected in the list an additional single Thumbnail **P** is displayed as preview.

The screenshot shows the user interface of kerbtier.de in list mode. The interface is dark-themed with green accents. It features a search bar at the top left, a sort/preview control panel at the top right, a main list area, and a photo comparison bar at the bottom. Numbered callouts (1-10) highlight various UI elements:

- 1: Search criteria dropdown menu (Species, contains, search button, reset button)
- 2: Search button
- 3: Sort/preview control panel (Sort, Gender, Preview)
- 4: List item indicator (L) and count (4)
- 5: Sort dropdown menu (systematic)
- 6: Gender dropdown menu (male)
- 7: Preview dropdown menu (list)
- 8: Main list area
- 9: Photo comparison bar (Photo comparison: 3x1)
- 10: Photo comparison bar (Photo comparison: 3x1)



kerbtier.de

Die Käferfauna Deutschlands

kerbtier.de – Die Käferfauna Deutschlands

© 2007–2015 Christoph Benisch

3.3 Controls of the user interface (available in both modes)

The controls ① - ⑨ marked with green color are available in both modes:

- ① Enter query: species or family name, red list, body length etc. If no species name is entered, the module tries to load the user-defined thumbnail view (same is valid at the start of the module).
- ② Start search by clicking the button „Search“.
- ③ Save user preferences as cookie (cookies must be enabled in the browser).
- ④ Species can be transferred to a slot by drag & drop.
- ⑤ Sort mode of the thumbnail overview or list in alphabetic or systematic order.
- ⑥ Select photo of male or female (if available)
- ⑦ Selection of the available modes „thumbnail“ or „list“.
- ⑧ Number and arrangement of the photo slots.
- ⑨ Slots for the photo comparison.
- ⑩ Save and publish the compilation



kerbtier.de

Die Käferfauna Deutschlands

kerbtier.de – Die Käferfauna Deutschlands

© 2007–2015 Christoph Benisch



3.4 Mode-specific controls of the user interface

The control **T** marked in yellow is only available in the mode „thumbnails“:

- T** Thumbnail overview of the matching species. Clicking a thumbnail selects the respective species.

The controls **L** and **P** marked in red are only available in the mode „list“:

- L** Text list of matching species. Clicking an entry selects the respective species.
- P** Preview thumbnail of the species selected in the list.



kerbtier.de

Die Käferfauna Deutschlands

kerbtier.de – Die Käferfauna Deutschlands

© 2007–2015 Christoph Benisch

4.1 Search species name and display thumbnail

In mode „thumbnails“:

Search species matching **all** of the below criteria (≤3)

Species: **Aphodius** contains

Sort/preview: systematic, male, thumbnails

Matching species: 23

Aphodius literatus, *Aphodius contaminatus*, *Aphodius prodromus*, *Aphodius scrofa*, *Aphodius fimetarius*, *Aphodius fasciatus*, *Aphodius ater*, *Aphodius rufus*, *Aphodius corvinus*

By entering the desired search criteria into the input fields **1** and clicking the search button **2** the data-base is searched for matching species and photos

In mode „thumbnails“:

Clicking a thumbnails in the overview **T** selects the species. The label of the selected species will be displayed in green.

In mode „list“:

Search species matching **all** of the below criteria (≤3)

Species: **Aphodius** contains

Sort/preview: systematic, male, list

Matching species: 23

Aphodius prodromus, *Aphodius scrofa*, *Aphodius fimetarius*, *Aphodius fasciatus*, *Aphodius ater*, *Aphodius rufus*, *Aphodius corvinus*

Preview: *Aphodius fimetarius*

In mode „list“:

Clicking an entry in the list **L** selects the clicked species and displays a thumbnail of the species in the preview **P**.



kerbtier.de

Die Käferfauna Deutschlands

kerbtier.de – Die Käferfauna Deutschlands

© 2007–2015 Christoph Benisch

4.2 Choosing number and arrangement of the slots for photo comparison

Search species matching of the below criteria (≤3)

Species contains

Sort/preview

Sort:

Gender:

Preview:

Matching species: 23

Aphodius prodromus

Aphodius scrofa

Aphodius fimetarius 4

Aphodius fasciatus

Aphodius ater

Aphodius rufus

Aphodius corvinus

Preview:

Photo comparison: 9

The number and arrangement of the slots for photo comparison 9 can be adjusted by the user from 2 x 1 (two photos) to 3 x 2 (6 photos) by clicking the corresponding radio button 8.

In both modes, the entries of the matching species 4 can be transferred into the picture slots by drag & drop.

When changing the number and arrangement of the slots, those pictures already displayed will be preserved except if the number of slots is smaller than before. In this case, the photos exceeding the new number of slots will be lost together with the zoom settings made by the user.



kerbttier.de

Die Käferfauna Deutschlands

kerbttier.de – Die Käferfauna Deutschlands

© 2007–2015 Christoph Benisch

5 Zoom & move

The photos displayed can be zoomed in, zoomed out and moved within their slots to display the interesting areas side by side as good as possible.

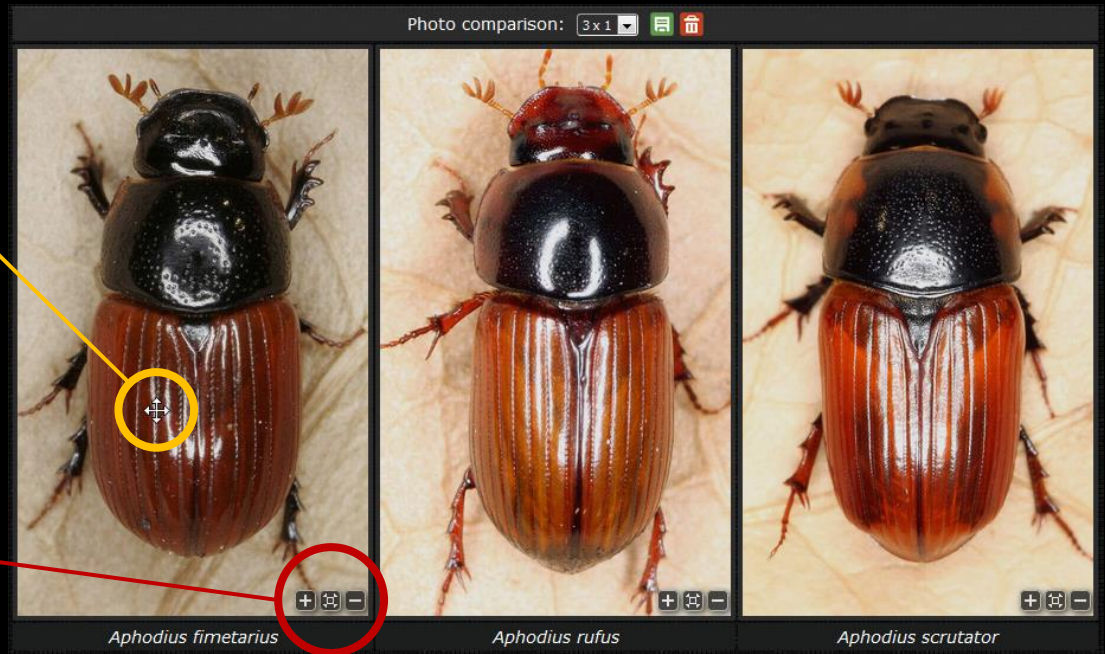
Move zoomed photo with the left mouse button pressed (like dragging)



Zoom out

Automatically fit to slot size

Zoom in





kerbtier.de

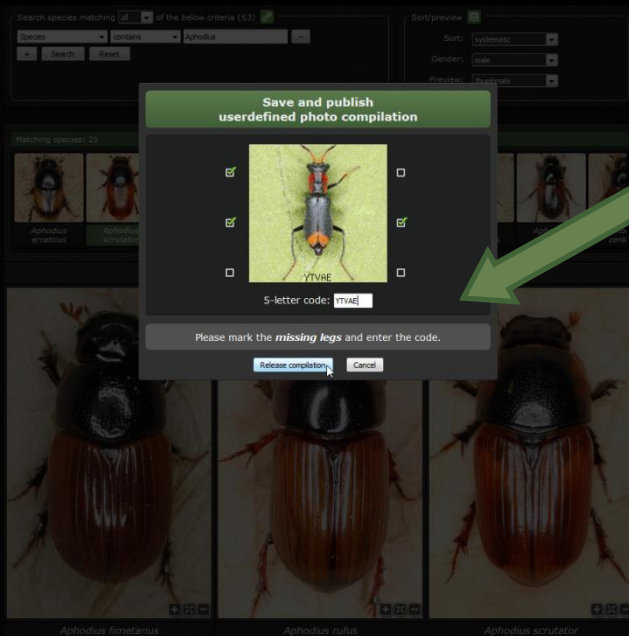
Die Käferfauna Deutschlands

kerbtier.de – Die Käferfauna Deutschlands

© 2007–2015 Christoph Benisch

6 Save and Publish

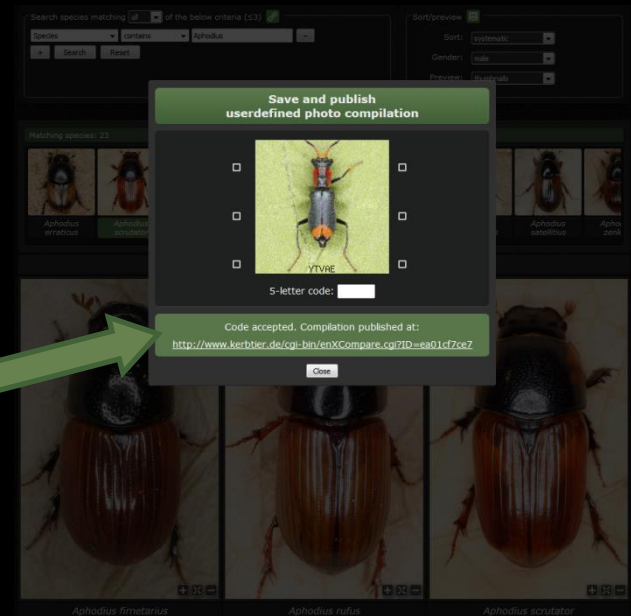
The comparison compiled by the user can be saved and made publicly accessible via the internet.



Just click “save and publish”

10 enter the code into the captcha and release your compilation.

If the captcha is entered successfully, the compilation is saved and a link is provided to access it. The link may be used like any normal hyperlink.



The comparisons saved and published will be available permanently, but will be reviewed occasionally by the admin team. Especially well made comparisons are searchable: <http://www.kerkbtier.de/cgi-bin/enXCompareSearch.cgi>



kerbtier.de

Die Käferfauna Deutschlands

kerbtier.de – Die Käferfauna Deutschlands

© 2007–2015 Christoph Benisch

7 Revisions

- 01.01.2011 Start of the new version (v.2) of the comparison module on kerbtier.de
- 09.01.2011 Start of the further improved version v.3
- 05.03.2011 Minor changes to reflect the new user-defined thumbnail list
- 20.03.2011 Selection of gender-specific photos (if available)
- 12.05.2011 Bugfix: Display error for species with certain specific names removed
- 01.06.2013 Start of the new version (v.4) with save & publish functionality
- 12.09.2015 Minor adaptations to improve design
- 31.10.2015 Start of the new version (v.5) with multiple-criteria query, drag & drop photo selection and further improved design